

WTS GSA TECHNICAL ADVISORY COMMITTEE VARIOUS AGENDA ITEMS



SEPTEMBER 8, 2022



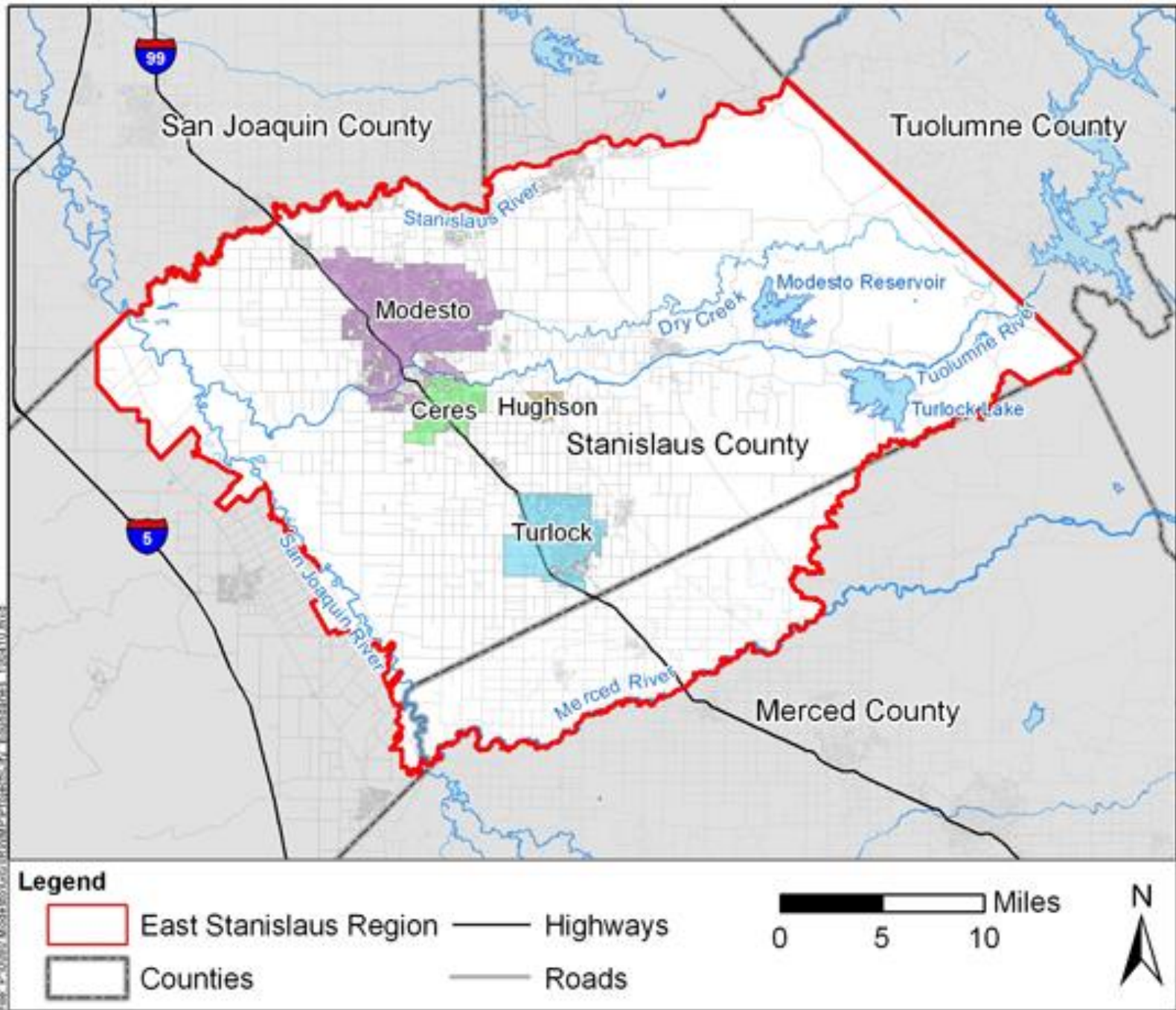
TURLOCK GROUNDWATER

MAINTAINING A PROJECT LIST FOR THE GSP – USING IRWM OPTI DATABASE



GSP IMPLEMENTATION SUPPORT ACTIVITY #11

- **GOAL:** Maintain an updatable list of projects for SGMA implementation
 - Grant funding may require projects to be specifically listed in the planning document
 - The GSP must be updated every 5 years
 - Projects could be identified in the interim
- *Solution:* Use IRWM list(s) as a “living” list (included as ISA #11 in GSP)
- Turlock Subbasin is within two IRWMs... with two different lists and systems...
 - East Stanislaus IRWM
 - Covers the majority of the subbasin
 - Merced IRWM
 - Will be working with Merced to determine the best approach for that region

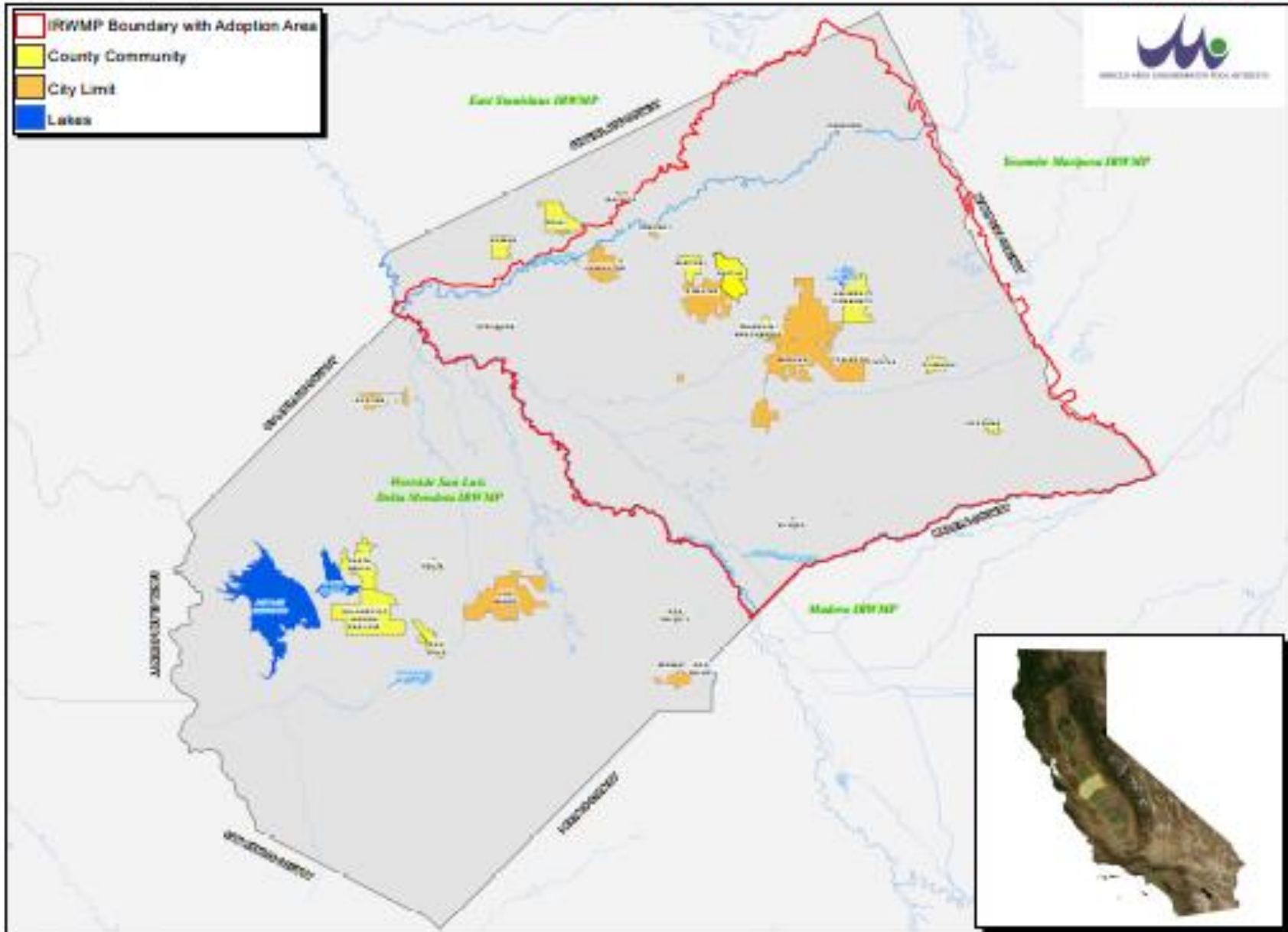




Merced IRWMP Boundary



- IRWMP Boundary with Adoption Area
- County Community
- City Limit
- Lakes



UPDATING OPTI DATABASE TO SUPPORT GSP PROJECT LIST



GSP IMPLEMENTATION SUPPORT ACTIVITY (ISA) #11

- OPTI Database for the East Stanislaus IRWM is maintained by Woodard & Curran
 - Modifications would be made to enable projects to be tagged as part of the GSP
 - Cost estimate: \$2,510
- ACTION ITEM: Authorize WTS GSA TAC Chair to initiate task order
- Adding projects to the OPTI databases would enable the projects to be eligible for funding from a variety of sources, including SGMA.
- Preparing for upcoming SGMA implementation grant (anticipated in October)
 - Encouraging project proponents to begin entering projects now & then update to indicate SGMA related when available
 - Projects may need to be included in the IRWM database to be eligible for funding if not already specifically listed in the GSP
- DEMONSTRATION...

THANK YOU!



@TurlockSubbasin



Turlock Groundwater



Turlock Groundwater



TURLOCKGROUNDWATER.ORG