

ETSGSA Overdraft Reduction Plan

Presented to:

*Joint Meeting of the East and West Turlock Subbasin
Groundwater Sustainability Agency Technical Advisory
Committees*

April 16, 2024

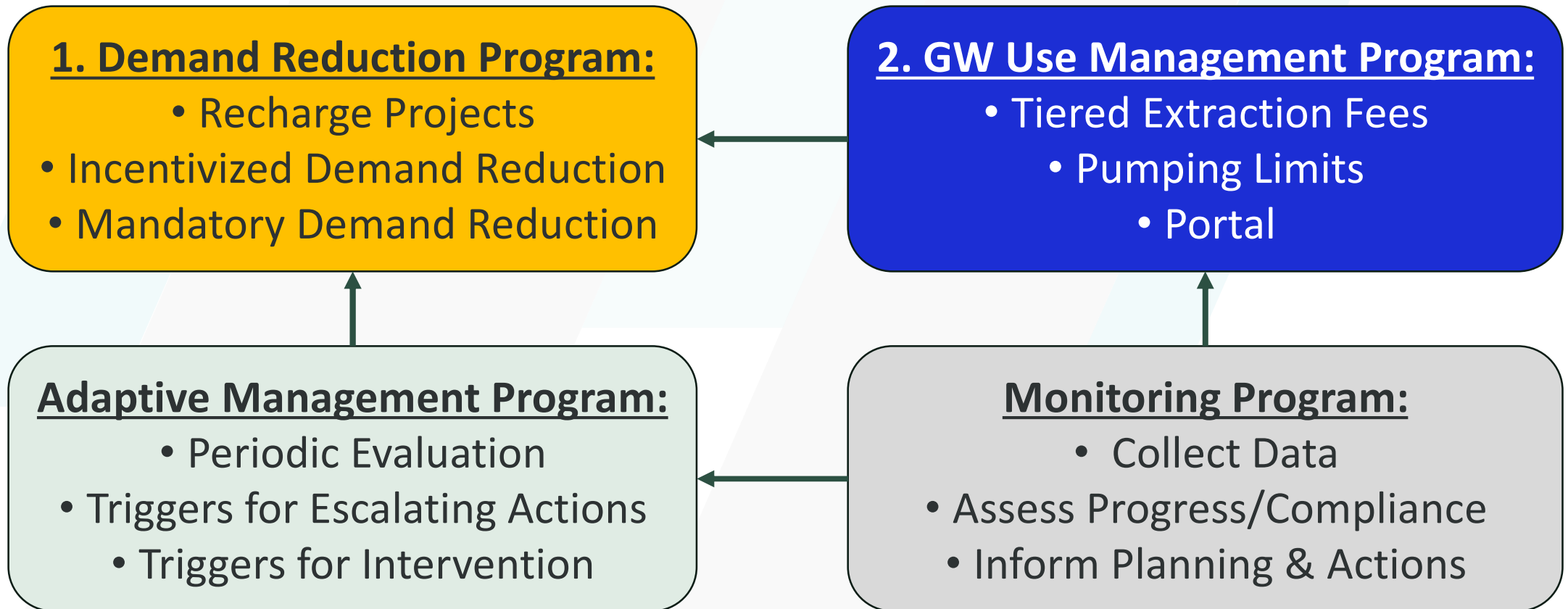
Call with DWR on April 11, 2024

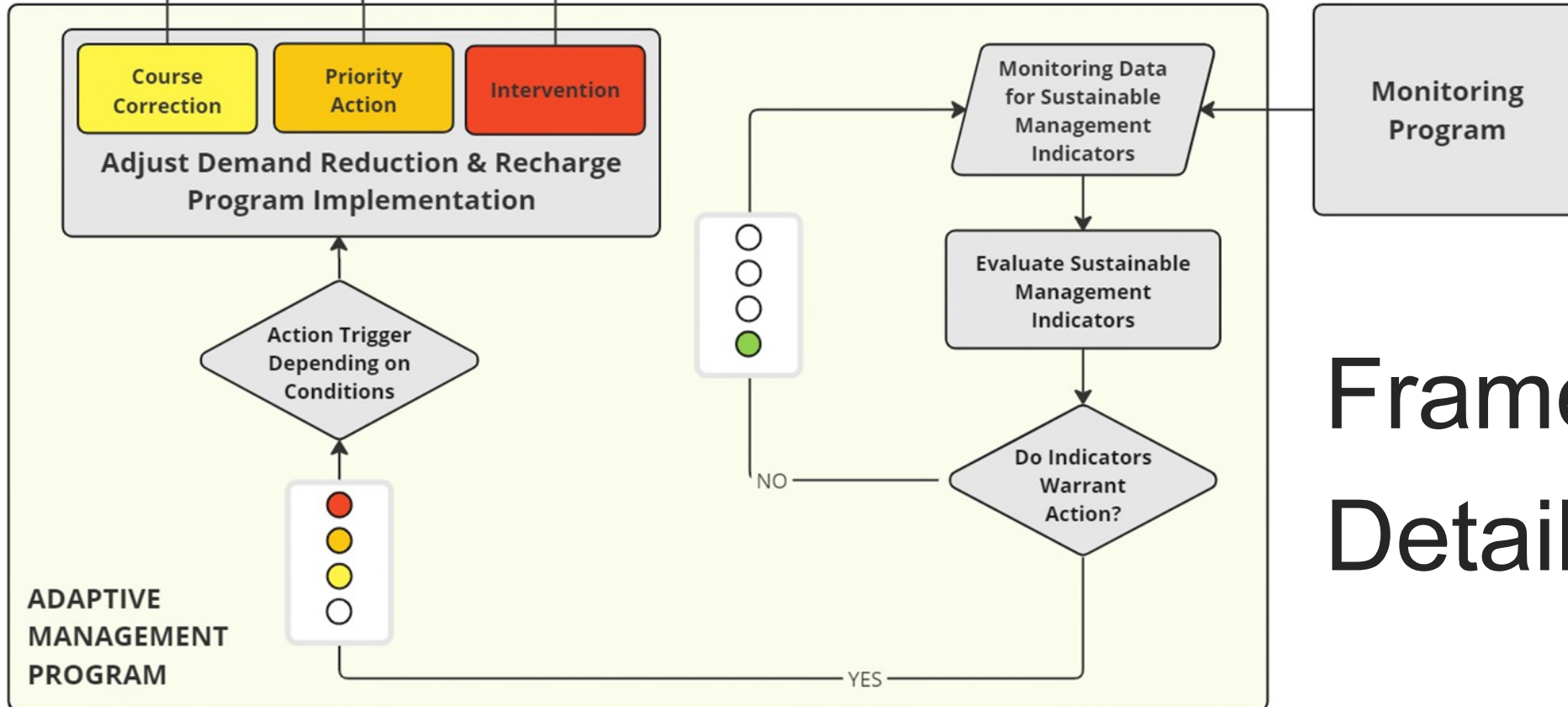
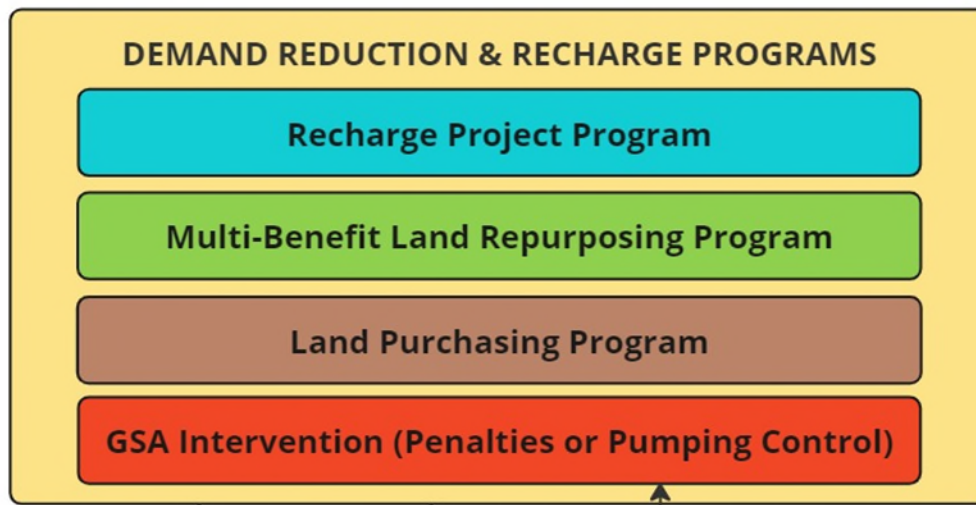
- GSA's chose SMCs that are high and will be operating below them for some time. Turning around groundwater levels is difficult
- Like the Overdraft Reduction Plan approach, but need to make sure it presents a clear and certain path to meet SMCs
- Modeling for illustrative purposes is fine, but will watch monitoring data to assess performance
- Define components (e.g. triggers, actions, schedules) precisely or provide a clear path and schedule to adopt them

Overdraft Reduction Framework with Groundwater Pumping Allocation Program

- Implement projects, prioritize demand reduction (including a pumping allocation program), and backstop with GSA intervention (pumping limitations) as needed
- Early Action beginning in 2024
 - Targeted priority actions in subsidence and IM exceedance areas
 - Adopt budget to begin targeted land purchase/pumping retirement
- Implementation-ready by early 2025
 - Concurrent development of Prop 218 Groundwater Use Fee, supporting Rules & Regulations, and Management Portal
 - Develop MLRP Plan, continue projects, develop intervention policy

Framework Overview: Two-Prong Strategy with Escalation Triggers



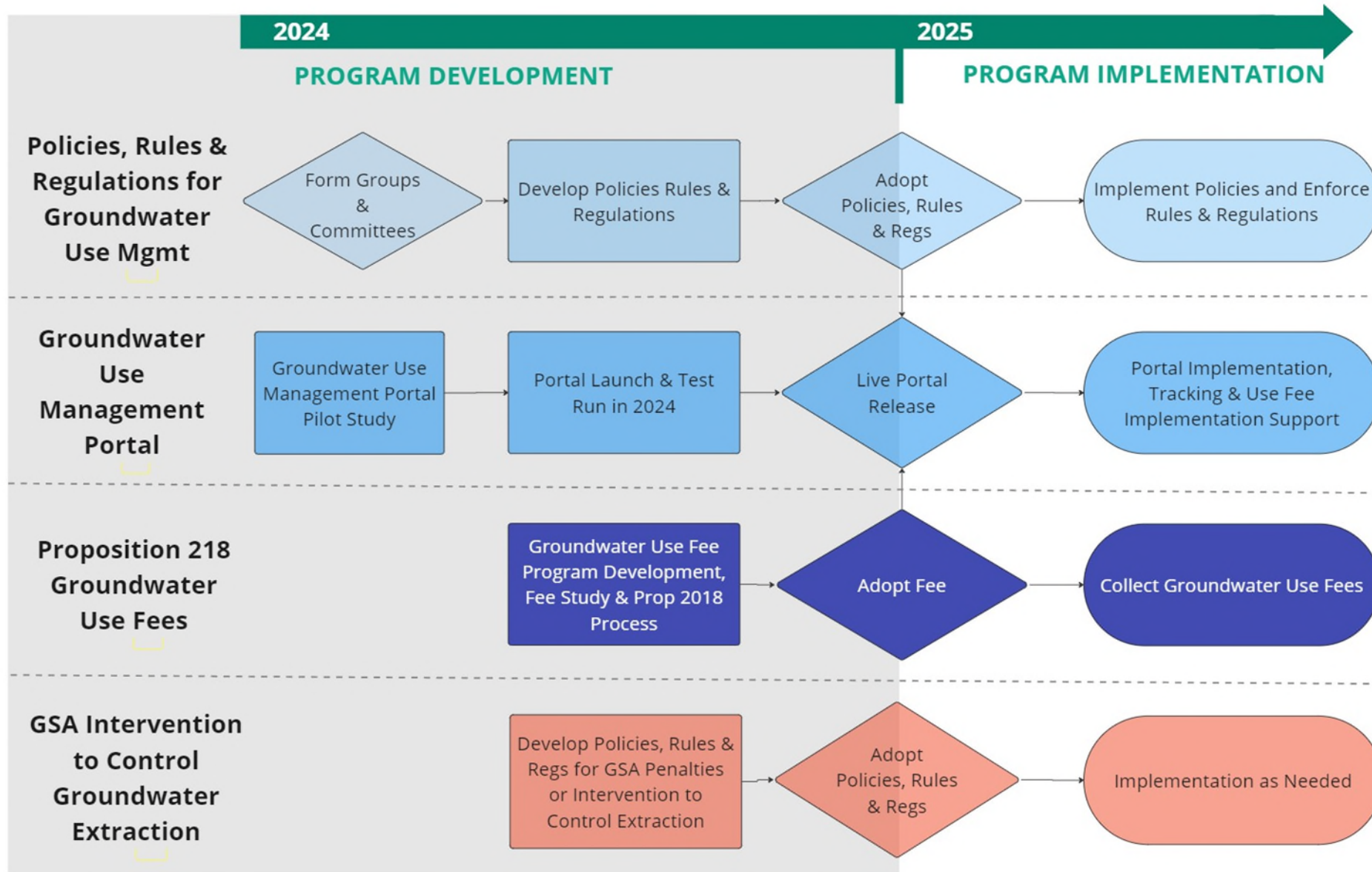


Framework Details

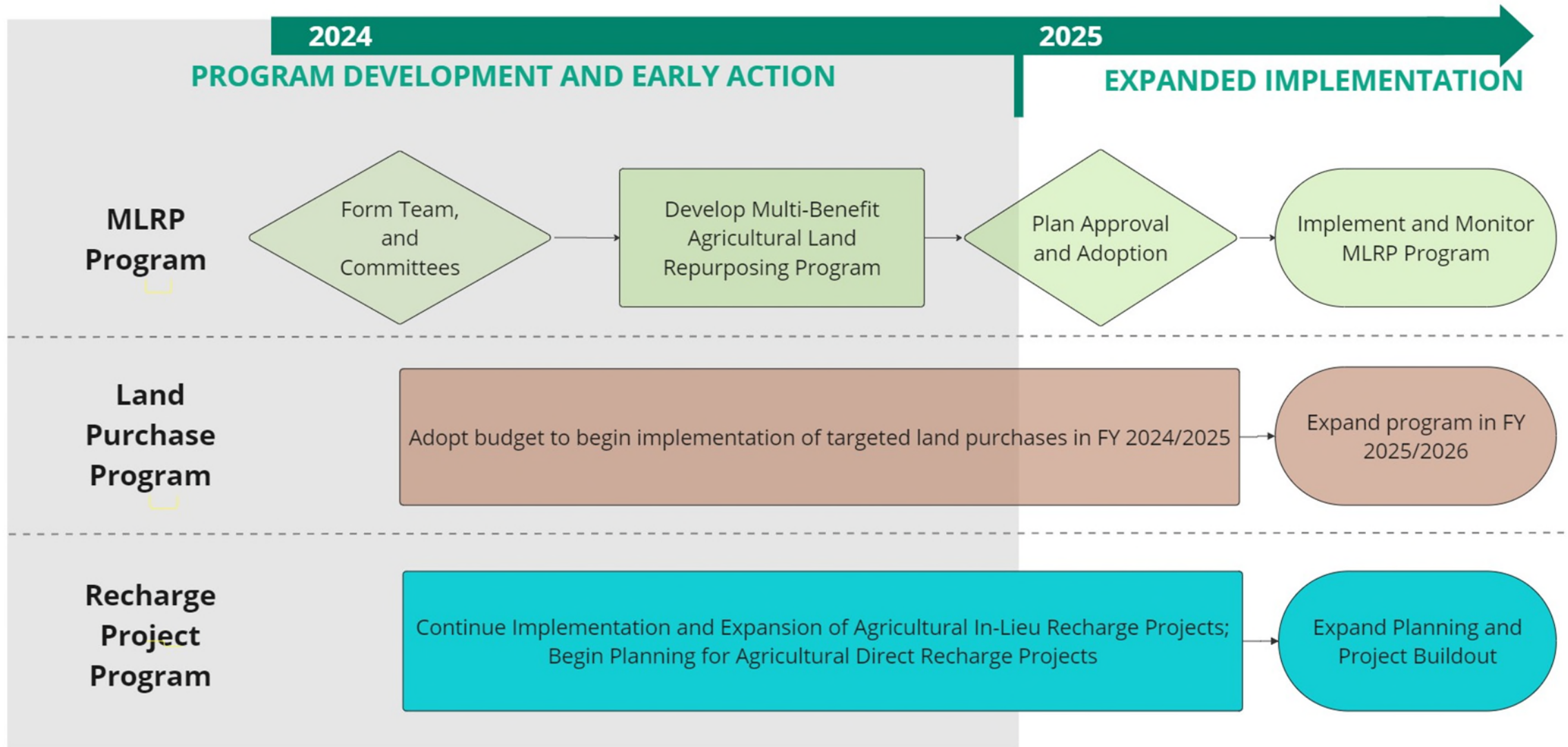
Groundwater Use Management Program



GW Use Management Program Development



Demand Reduction & Recharge Program Development



Development of Subsidence and IM Exceedance Priority Action Plan

As a first step, the GSAs are developing a Subsidence and IM Exceedance Priority Action Plan. The Action Plan includes:

- Enhanced monitoring of subsidence
- A land purchase/irrigation retirement program by ETSGSA starting FY 24/25;
- Priority for MLRP projects near Subsidence & IM exceedance areas starting 2025
- Investigation and prioritization of recharge project opportunities in Subsidence and IM exceedance areas
- Triggers for program escalation and enforcement of pumping restrictions implementable starting 2025

AVERAGE ANNUAL GROUNDWATER EXTRACTION UNDER ETSGSA OVERDRAFT REDUCTION PLAN

