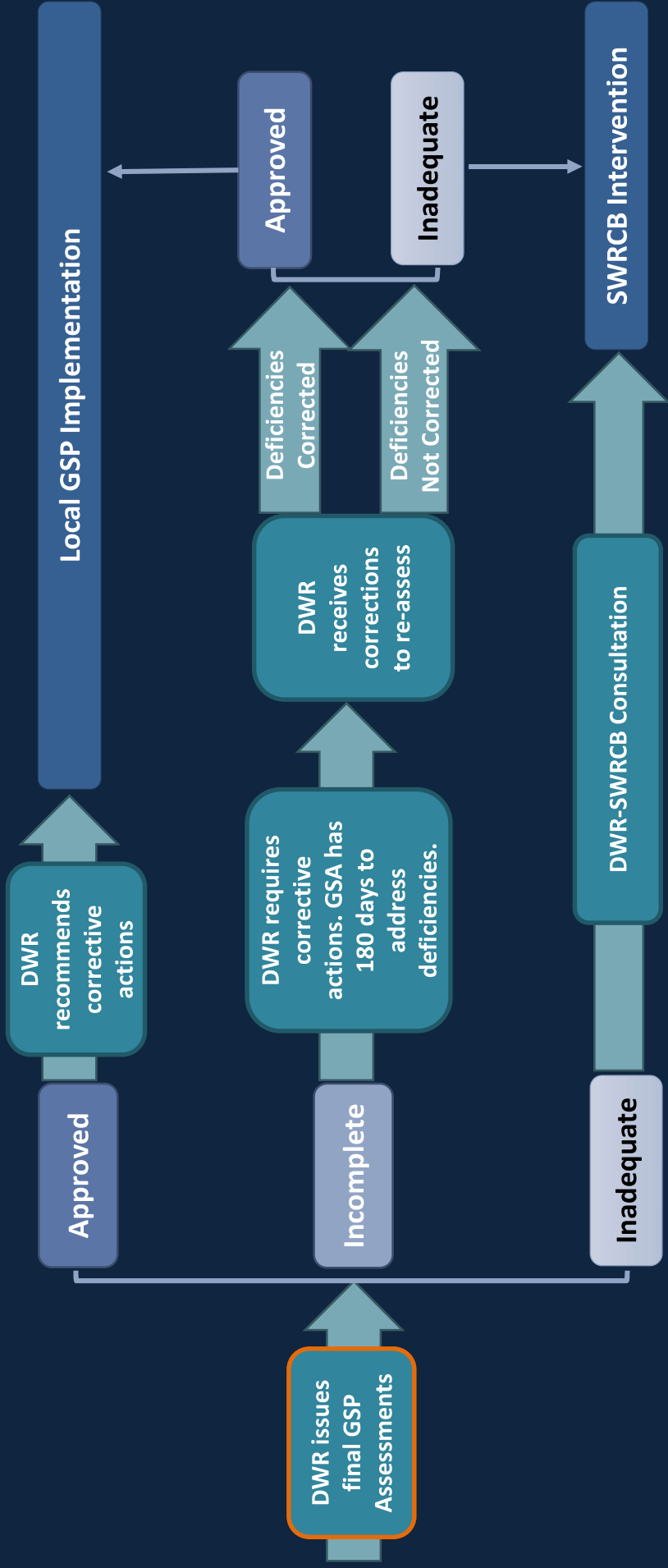
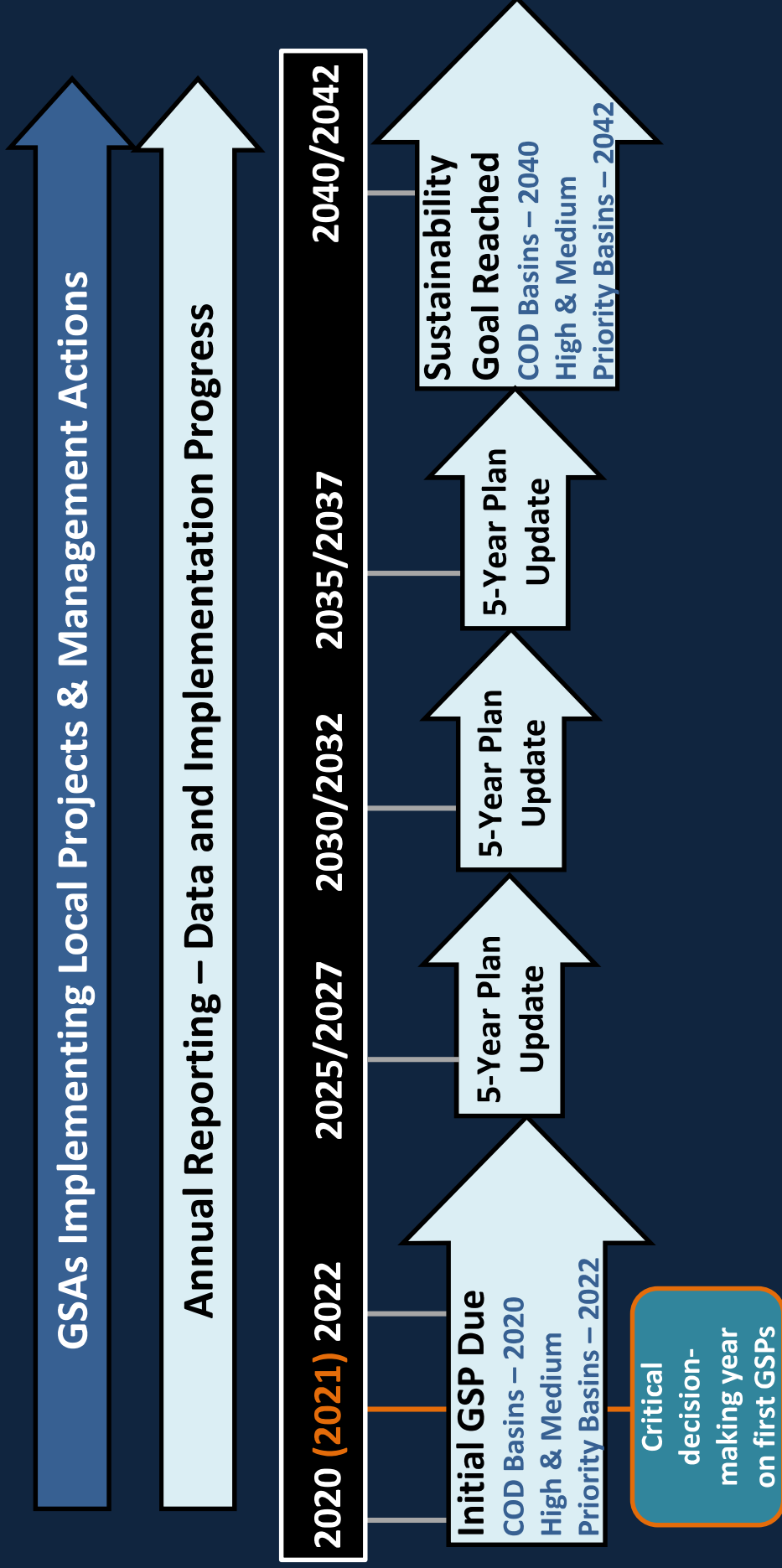


SGMA Regulatory Pathways

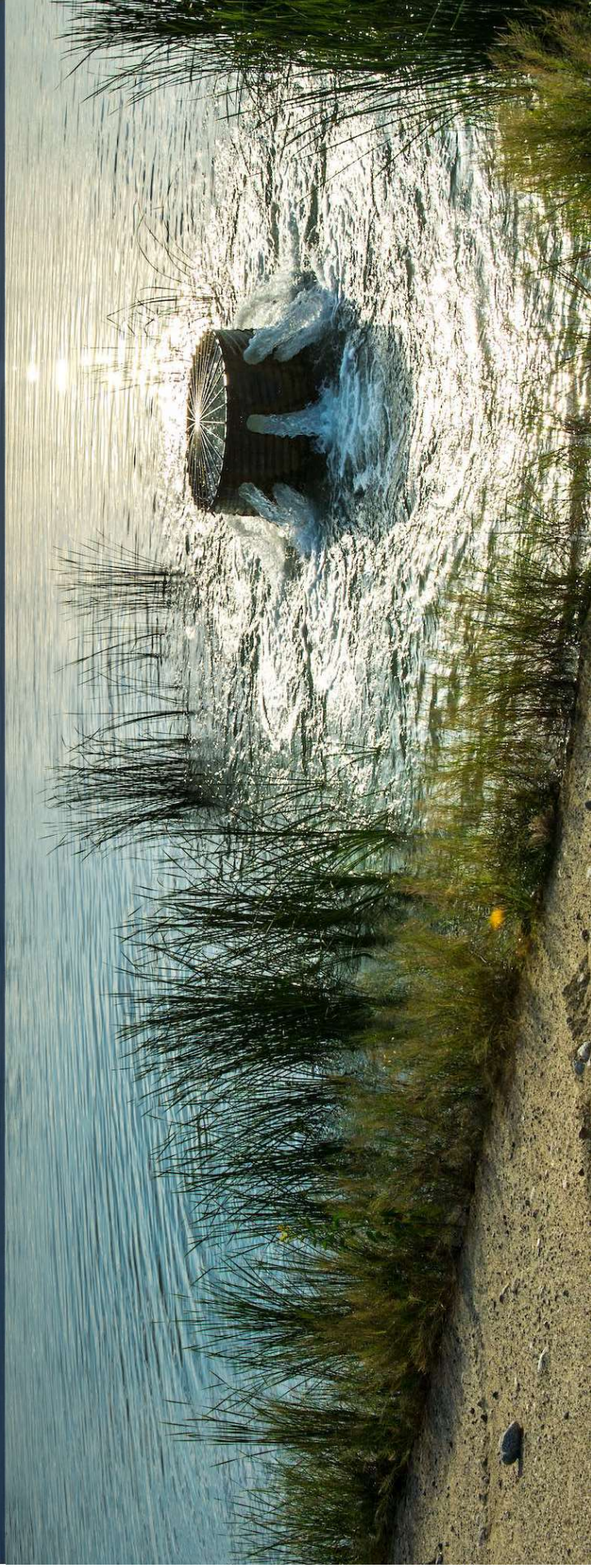


Assessment Release Approach

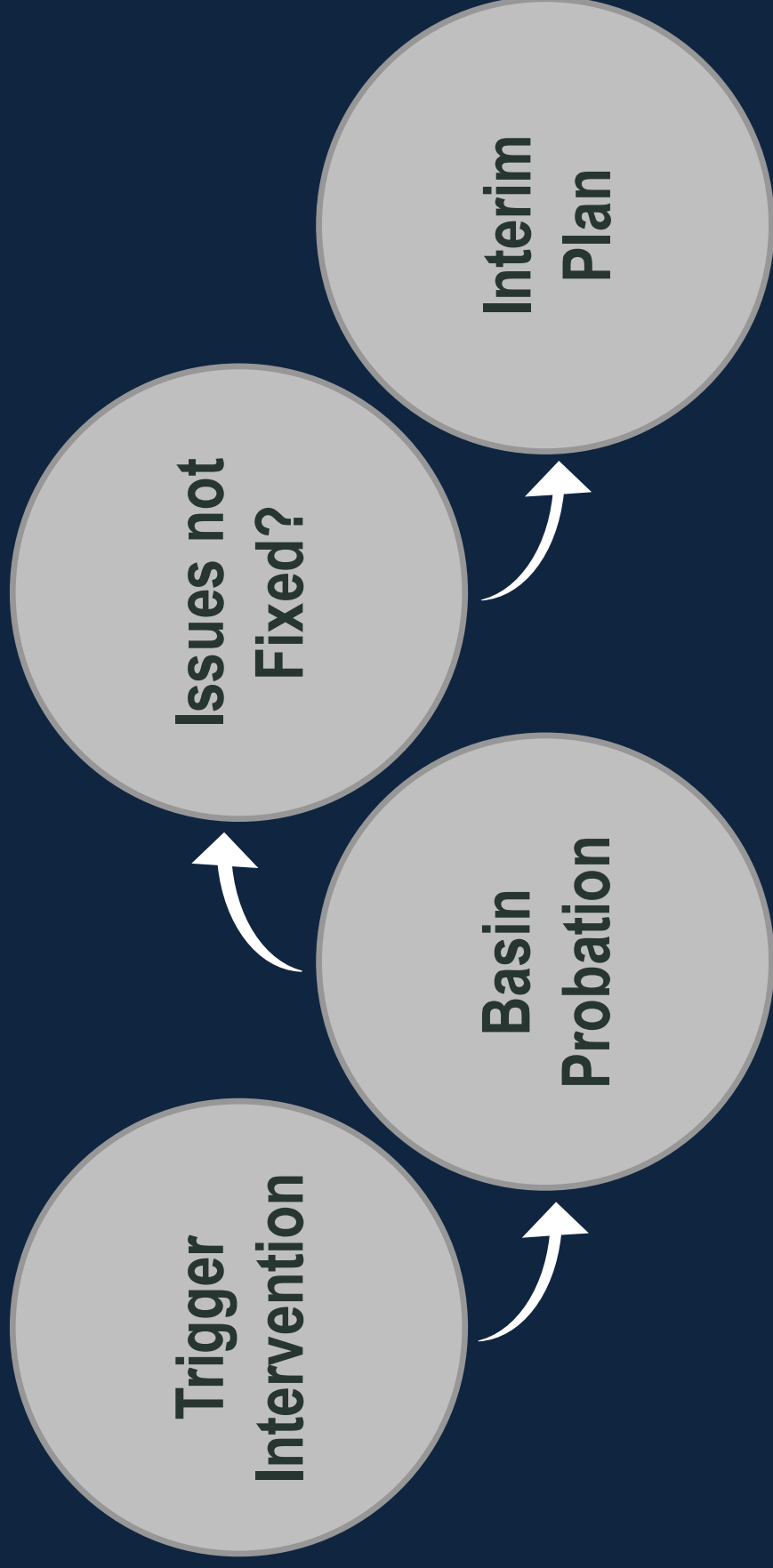


Board Backstop Basics

- 1 Board only steps in when local efforts fail.
- 2 Temporarily protects the basin until locals come up-to-speed.
- 3 Backstop is triggered by SGMA deadlines.



Backstop



Probationary **B**ASIN groundwater



State Water Board makes decisions



Opportunity to fix issues



Board gathers data



May require meters



Fees



FEES beginning in Water Year 2018



\$300

Unmanaged

\$25

Probation

\$40*

Interim Plan

\$55*

25%

*special studies extra

Extraction **REPORTS**

Reports are submitted annually.

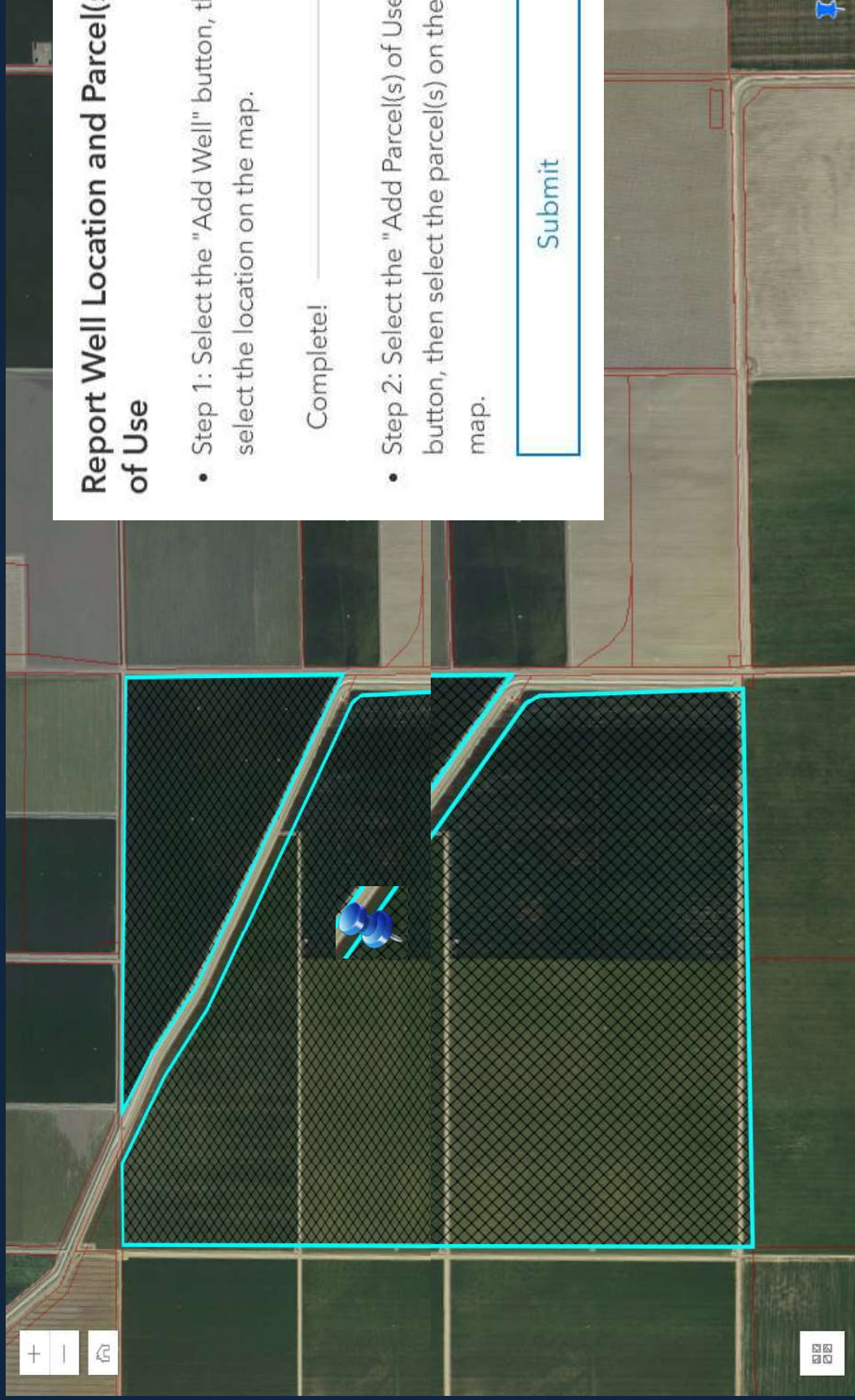
Reports require....

- well location & capacity
- monthly extraction volumes
- place & purpose of use

Reports must be filed electronically.

Information on extraction reports is available at
www.waterboards.ca.gov/water_issues/programs/gmp/reporting.shtml.

GEARS Groundwater Evaluation, Analysis, and Reporting System

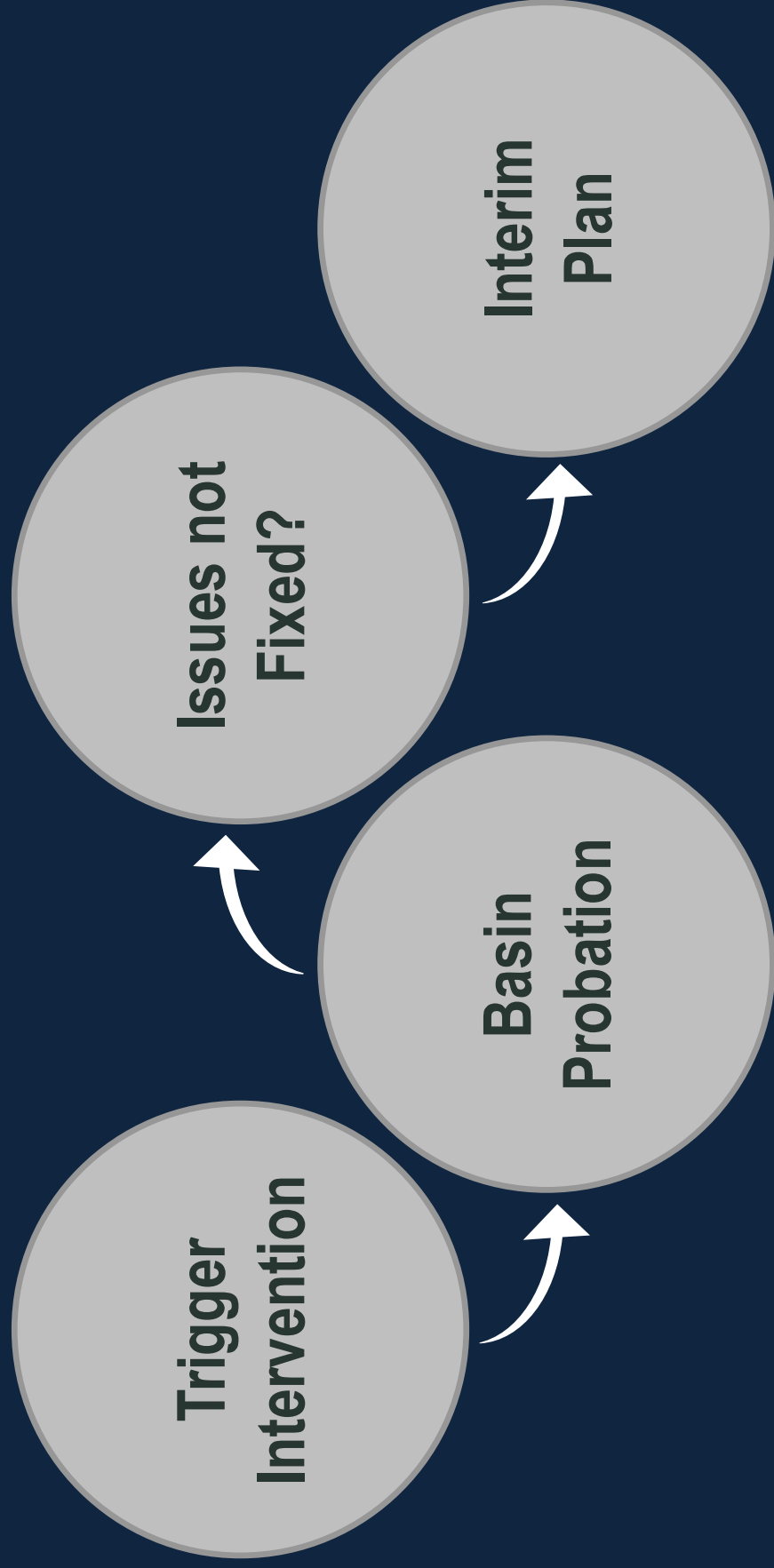


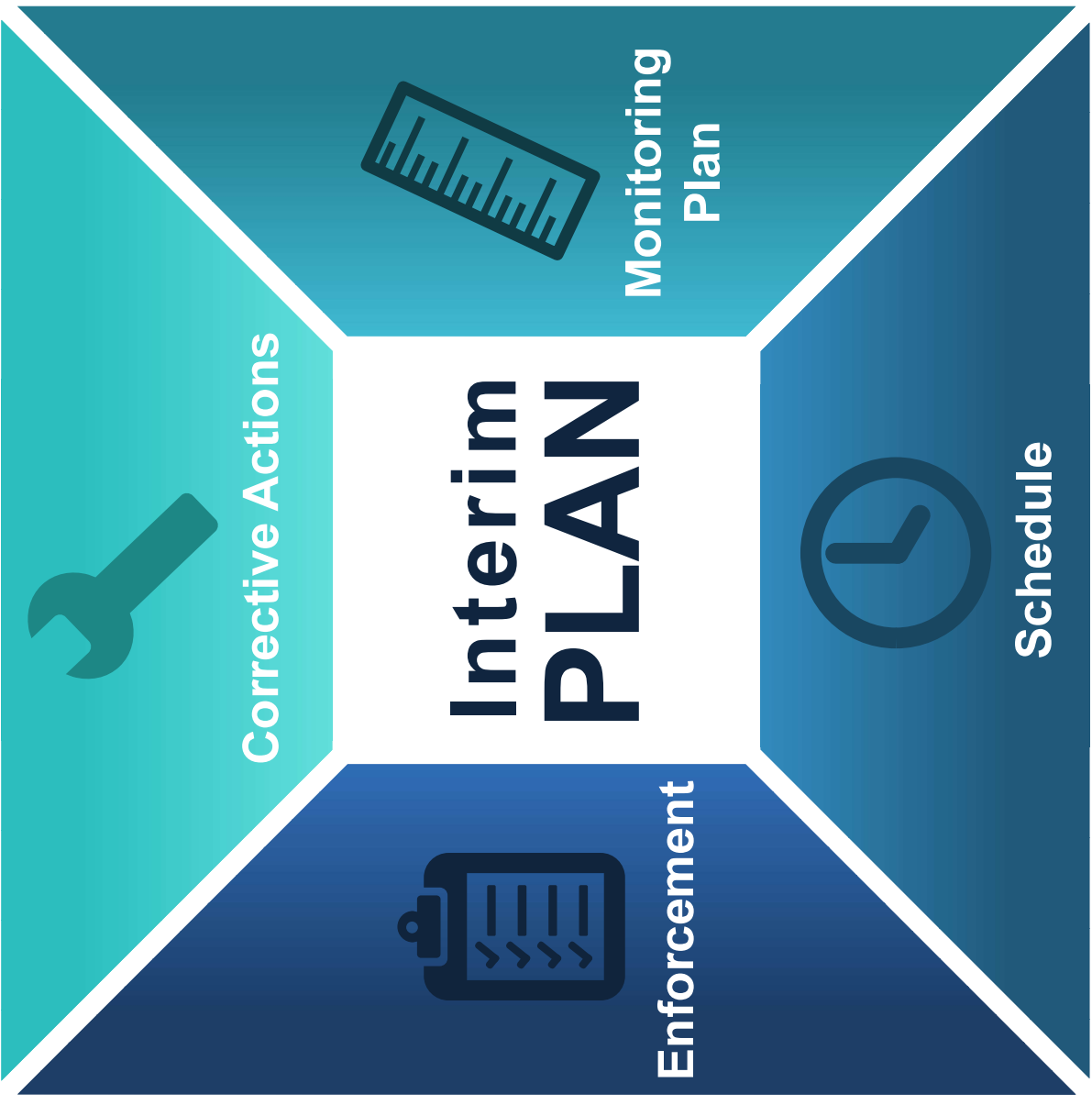
Board INVESTIGATIONS



- Broad authority to conduct investigations
- Informational orders
- Board works with individual pumpers
- Additional fees (beyond reporting fees)

Backstop





Interim PLAN

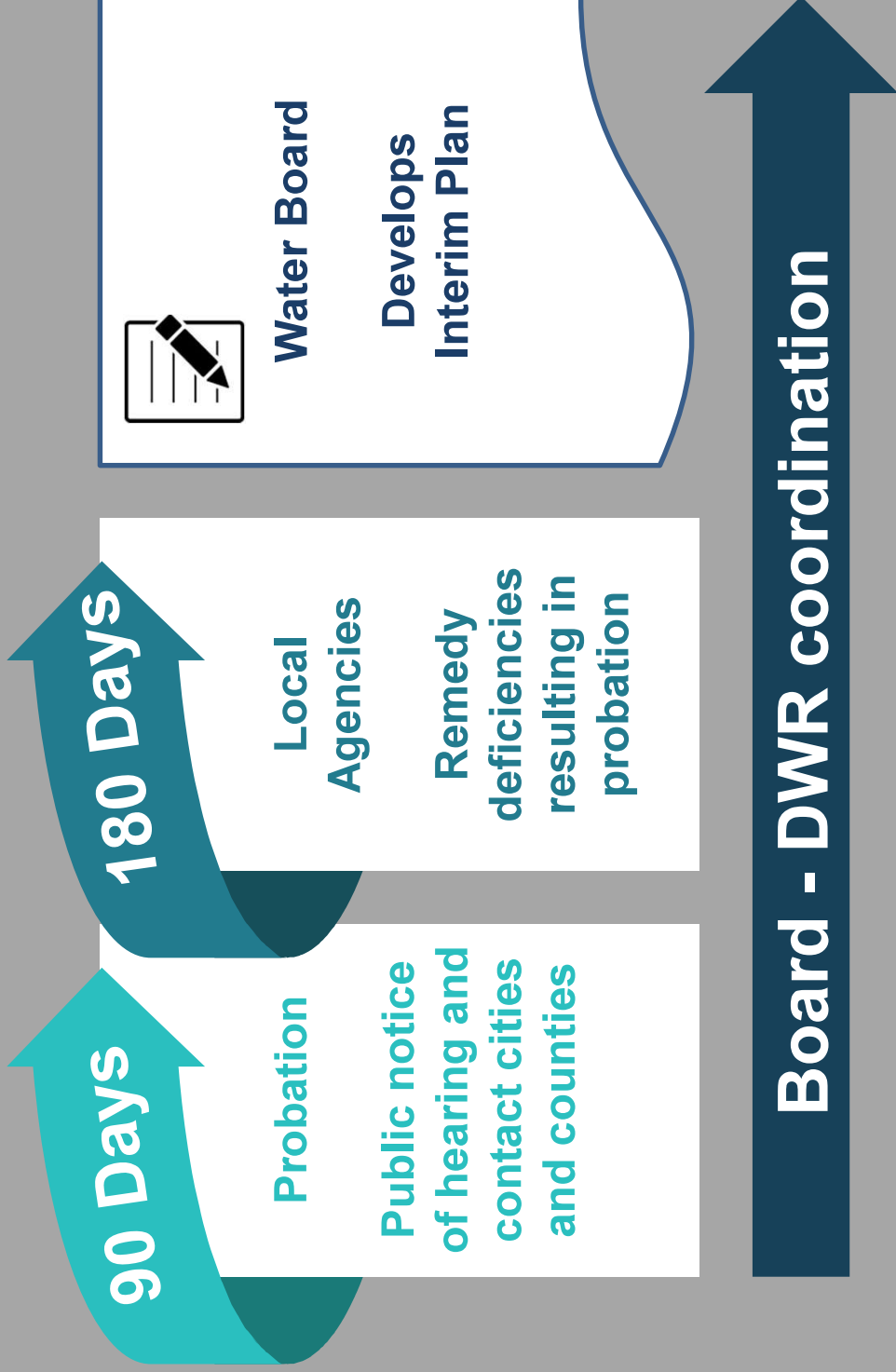
Corrective Actions

Monitoring
Plan

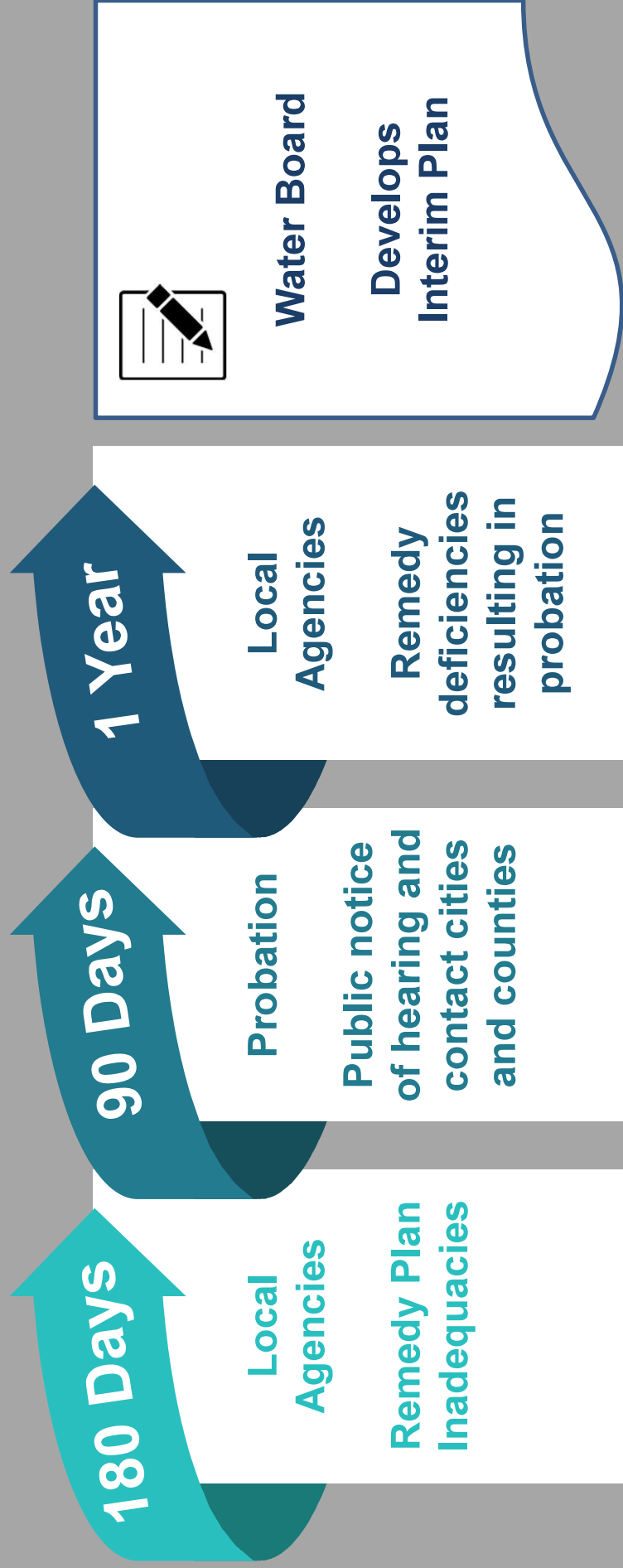
Schedule

Enforcement

NO Plan



INCOMPLETE Plan



Board - DWR coordination

INADEQUATE Plan

